

**MODEL 9-7500**

**ILLUSTRATED PARTS BREAKDOWN**

**MODEL 9-7500**  
**IPB Notice and Revision History**


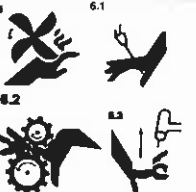

This document and the information contained herein is the property of Arc Machines, Inc. It is proprietary and submitted and received in confidence. It shall be used only for the purpose for which it is submitted and shall not be copied in whole or in part without the prior express written permission of Arc Machines, Inc. The information in this document has been carefully reviewed and is believed to be accurate. However, no responsibility is assumed for inaccuracies. Information and part numbers in this document are subject to change and Arc Machines, Inc. reserves the right to change required data without notice.



**WARNING**



The nature of the GTAW process creates some POTENTIAL HAZARDS. In accordance with international safety regulations the EXCLAMATION SYMBOL indicates that this equipment is considered HAZARDOUS. The LIGHTNING FLASH SYMBOL indicates that there are potential electrical hazards. The display of these symbols makes it the OPERATOR'S RESPONSIBILITY TO ENSURE THAT THEY HAVE BEEN MADE AWARE OF and shall observe the hazardous conditions.

	<b>WARNING:</b> AMI factory training is essential for all Maintenance Technicians who operate AMI equipment. Do not operate or service this equipment without proper AMI approved training.
	<b>WARNING:</b> Keep hands and fingers clear from moving parts such as fans, gears, rotors, Wire Feed, Weld Head Travel, i.e. Oscillation (OSC) and Arc Voltage Control (AVC) mechanisms  Weld Head AVC and Oscillator Slide Assemblies develop high forces and it is possible, by their nature of operation, to harm any object or body part that may get into these areas. <b>USE EXTREME CAUTION!</b>
	<b>Electrical Shock Hazard:</b> Always disconnect weld heads when servicing internal components or opening housing covers for access.

All rights reserved.  
Publication date: First Edition – June 5, 2007  
Copyright 2007 by Arc Machines, Inc.

REV	ECO #	CHANGE DESCRIPTION	DATE	BY	APR
A	4678	On 090123 Change Item 6 & 23	7 Mar 2008	SO	BF
B	4916	On IPB 090123, changed Item 3 to SCS08-32-0.75NP, was SCS08-32-0.75BO	21 May 2008	SO	BF
C	4779	Added rev D of 750015	26 May 2008	SO	BF
D	5579	Added rev F of 750015 and Wiring Diagram	18 Jan 2010	CB	DC
E	5753	Update IPB 090123, remove cable parts from 090123 and updated TOC	10/6/10	GB	DC

## TABLE OF CONTENTS

DATE EFFECTIVE: 6 Nov 1985

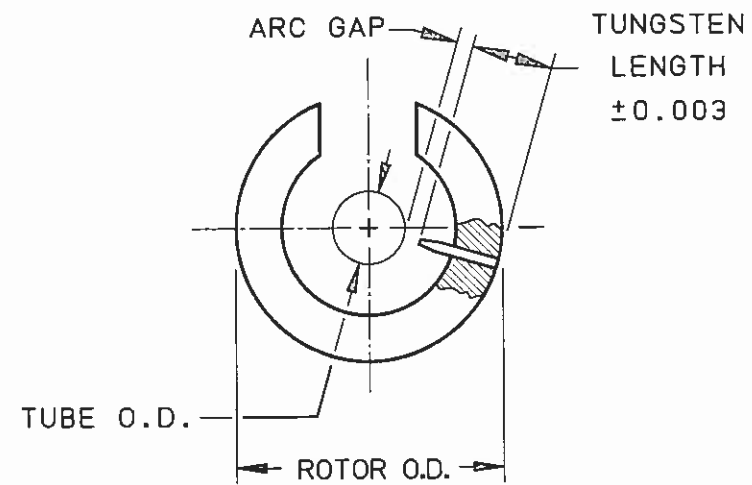
PRODUCT MODEL: 9-7500  
MANUAL NUMBER: 730036

<b>IPB NUMBER</b>	<b>DESCRIPTION</b>
750015	MODEL 9 ELECTRODE DIMENSIONS
090123	MAIN ASSEMBLY
090106	MODEL 9E CONFIGURATION
750031	MODEL 9 CONVERSION TO MODEL 9E INSTRUCTIONS
090800	CABLE ASSEMBLY M9
175144-05	MODEL 9 WELD HEAD WIRING DIAGRAM

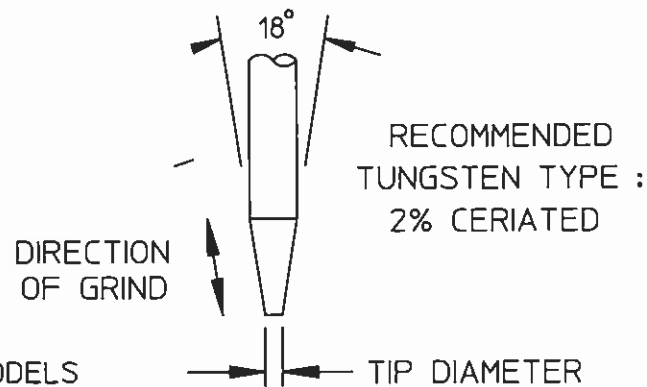
## ELECTRODE DIMENSIONS

ROTOR DIAMETER	
MODEL NO.	ROTOR O.D.
9-250	0.802
9-500/4-500	1.388
9-675	1.715
9M-750	1.312
9-750	2.000
9-1500	3.187
9AF-1500	2.252
9E-1500	2.687
8-2000	3.450
9-2500	4.380
9AF-2500	3.156
9E-2500	4.280
* 9-3500	5.380
9E-3500	5.310
8-4000	5.310
* 9-4500	6.875
9ER-4500	5.776
8-6625	8.094
* 9-7500	10.440
9E-7500	9.375
* FOR HEADS USING OPTIONAL TUNGSTEN EXTENDER, SEE PAGE 2.	

$$\frac{\text{ROTOR O.D.} - \text{TUBE O.D.}}{2} - \text{ARC GAP} = \text{TUNGSTEN LENGTH}$$



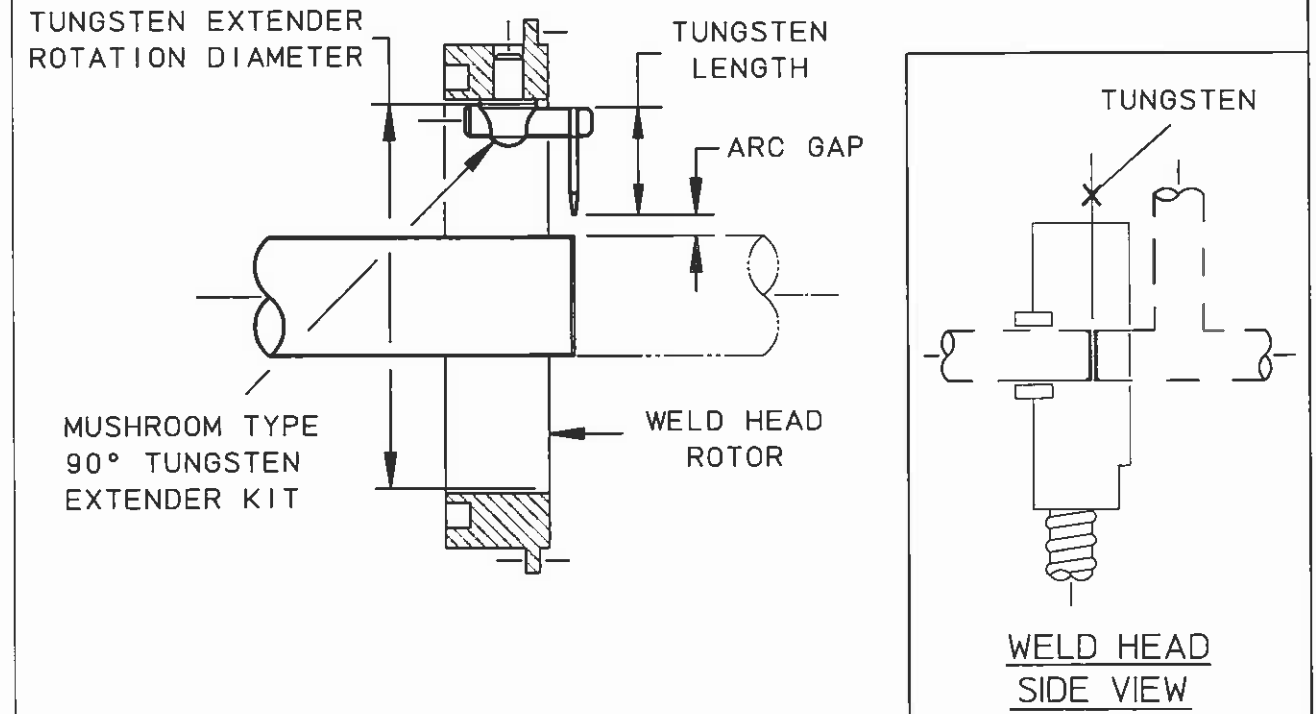
TUBE/PIPE WALL THICKNESS	RECOMMENDED ARC GAP	RECOMMENDED TIP DIA.
0.020/0.035	0.030	0.020
0.049/0.085	0.050	0.030
0.091/0.154	0.070	0.040



- NOTES:
1. RECOMMENDED ARC GAP FOR MODELS 4-500, 9-250 & 9-500 IS 0.045 MAXIMUM.
  2. IN INSTANCES WHERE OUT-OF-ROUNDNESS ON THIN-WALLED TUBING OCCURS (NORMALLY 2.500 O.D. OR LARGER), A 0.070 ARC GAP IS RECOMMENDED.
  3. DIMENSIONS ARE IN INCHES.

## TUNGSTEN LENGTH CALCULATION FOR TUNGSTEN EXTENDERS

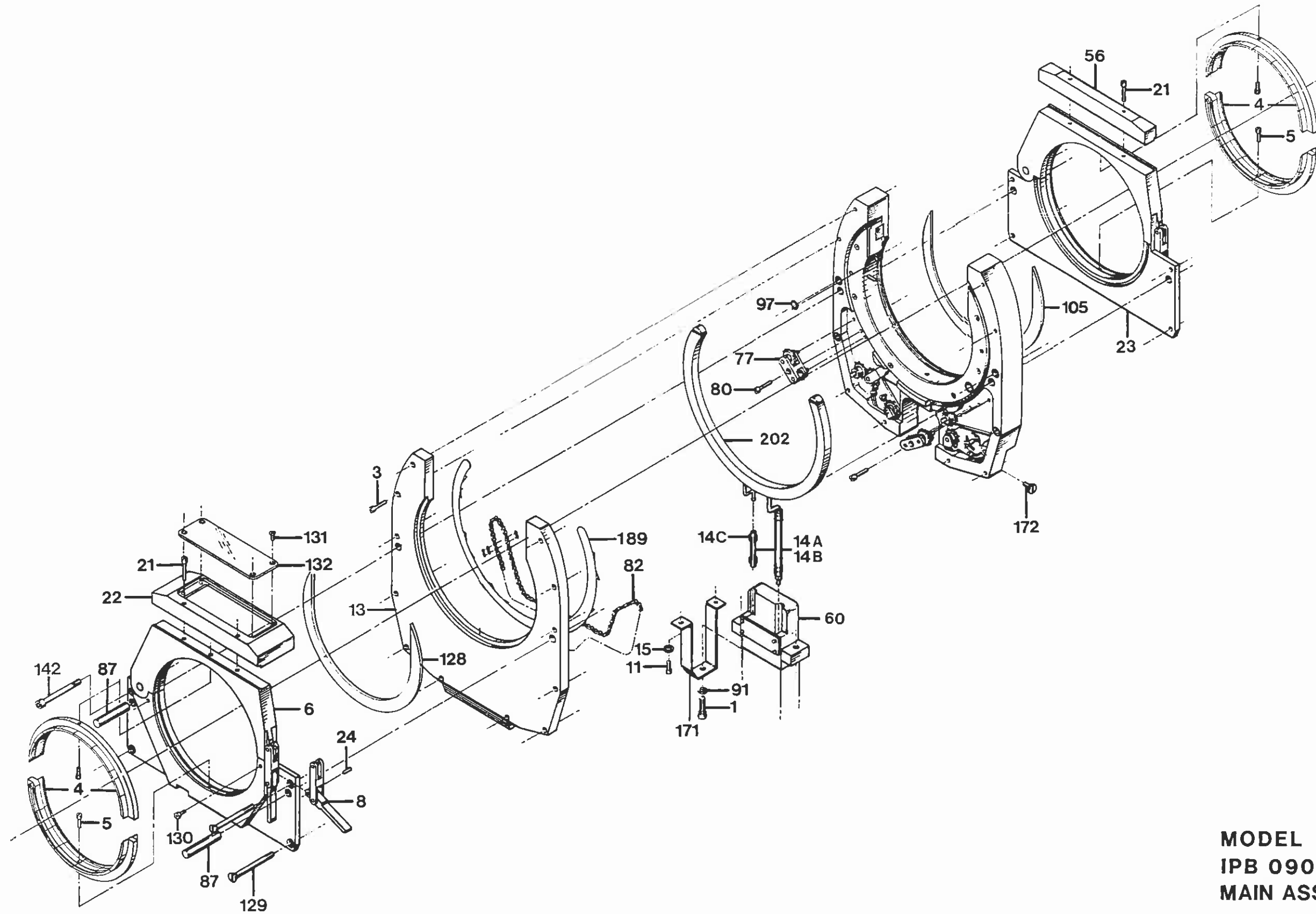
$$\frac{\text{EXT. ROTATION DIA} - \text{TUBE O.D.}}{2} - \text{ARC GAP} = \text{TUNGSTEN LENGTH} \pm 0.003$$



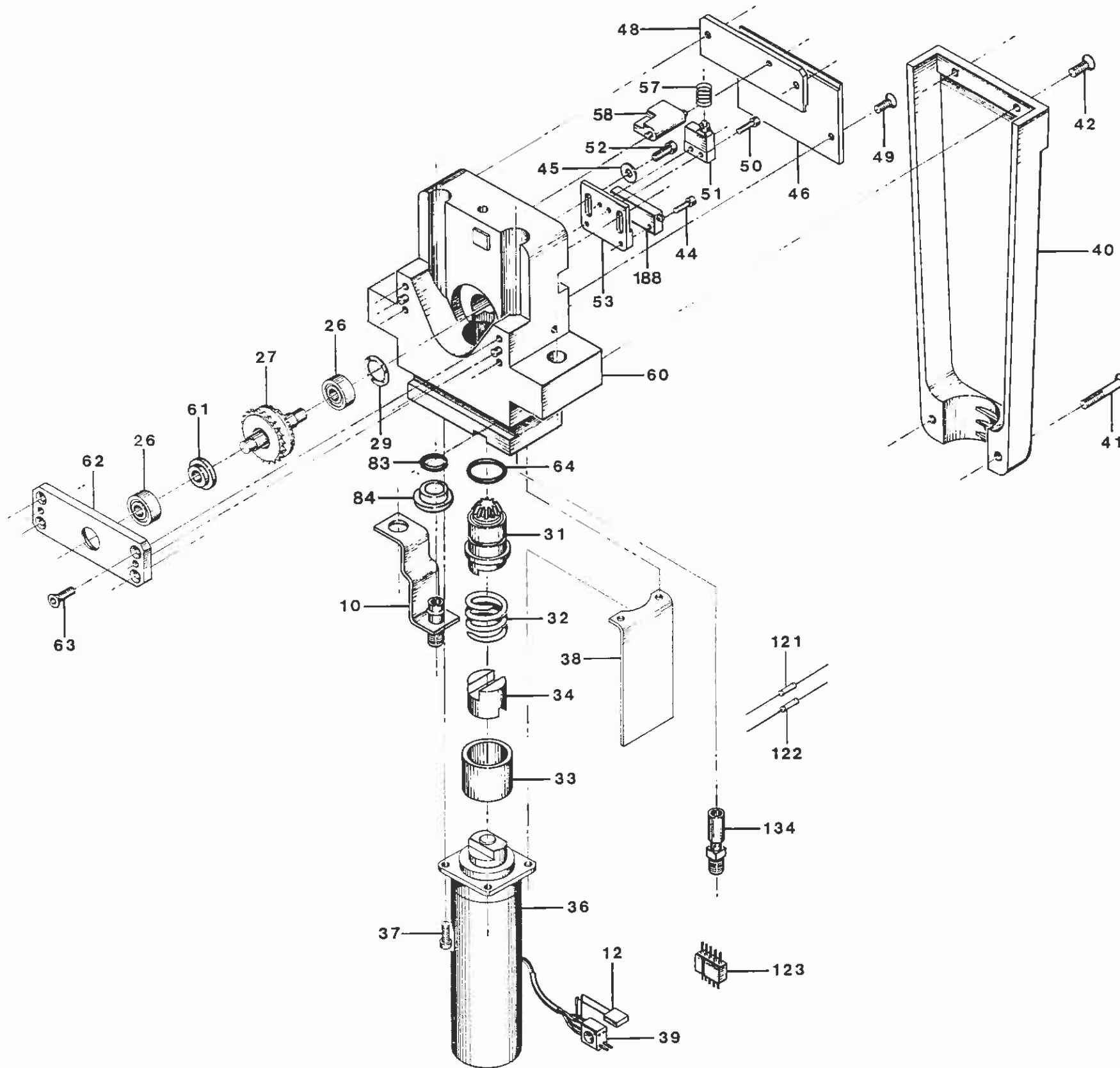
WELD HEAD MODEL NO.	KIT WITH 1/16 TUNGSTEN HOLDER PART NO.	KIT WITH 3/32 TUNGSTEN HOLDER PART NO.	TUNGSTEN EXTENDER ROTATION DIA.
9-1500	13090796-01	13090796-02	2.031
9-2500	13090796-05	13090796-06	3.156
9-3500	13090796-05	13090796-06	4.031
9-4500	13090796-03	13090796-04	4.920
9-7500	13090796-05	13090796-06	8.280

### NOTES:

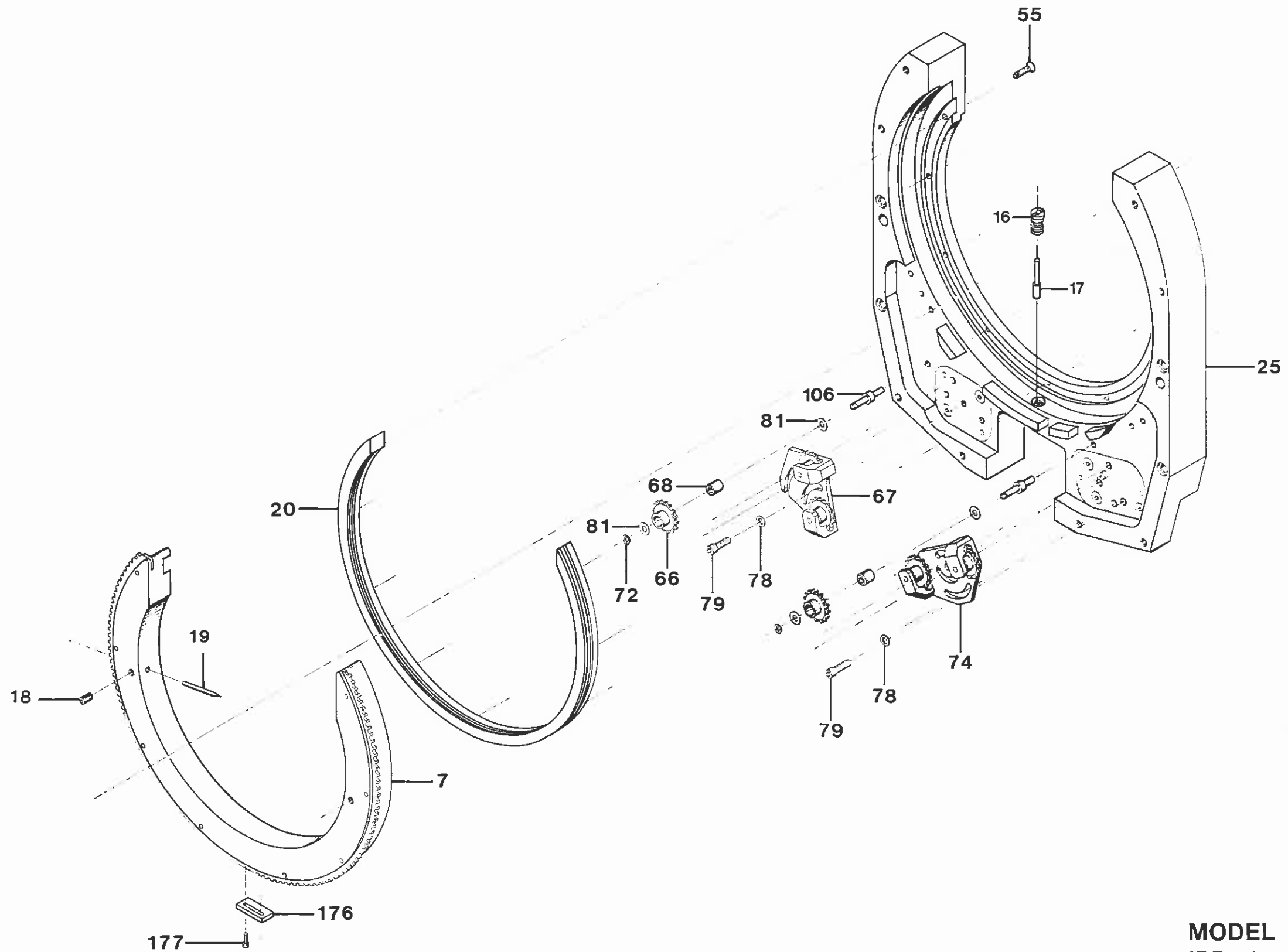
1. PART NUMBERS SHOWN ARE FOR REFERENCE ONLY AND ARE SUBJECT TO CHANGE.
2. CONTACT AMI SALES OR SERVICES FOR SPECIFIC PART NUMBER.



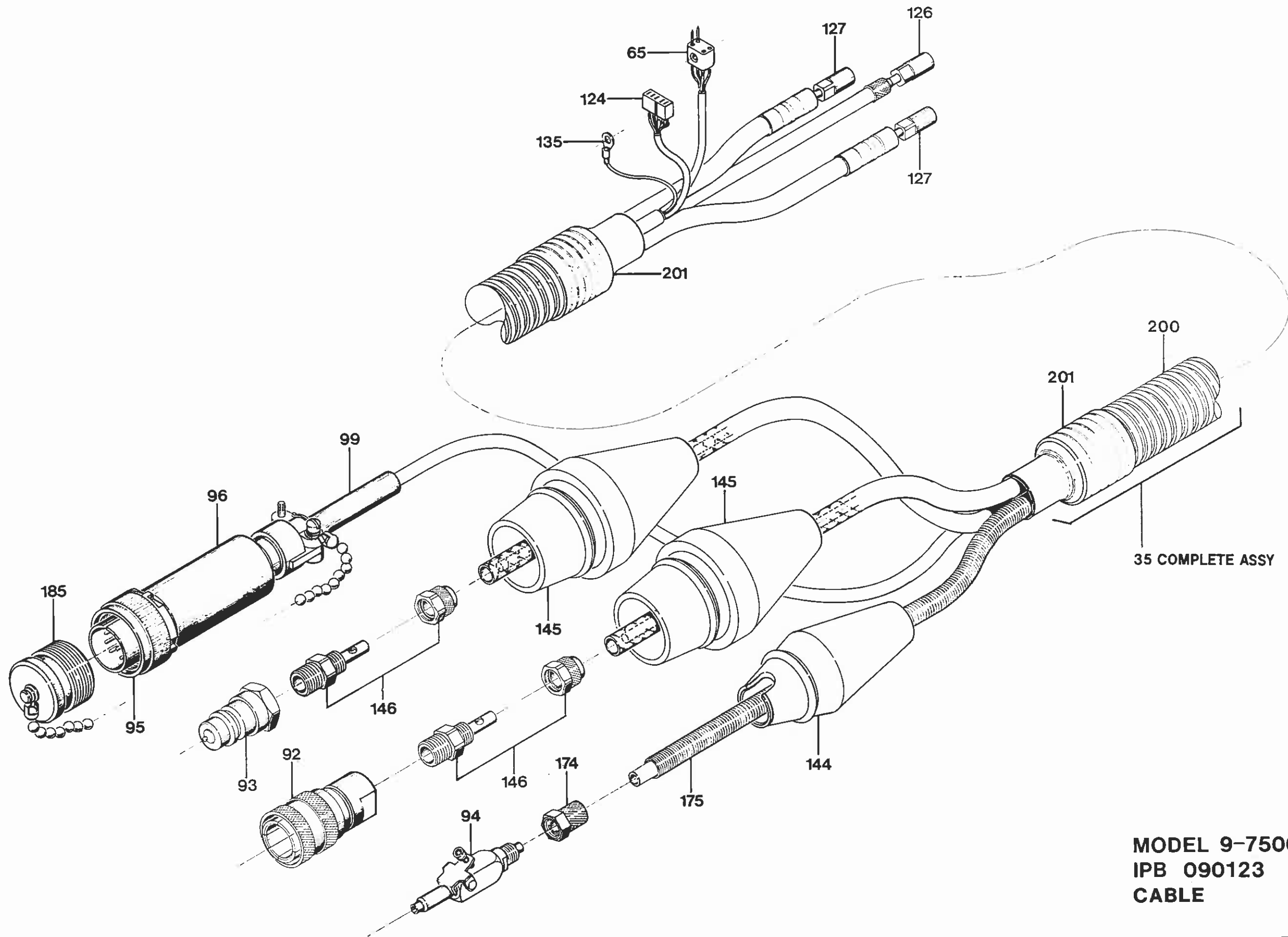
MODEL 9-7500  
IPB 090123  
MAIN ASSEMBLY



MODEL 9-7500  
IPB 090123  
DRIVE ASSEMBLY



MODEL 9-7500  
IPB 090123  
HOUSING ASSEMBLY



MODEL 9-7500  
IPB 090123  
CABLE



IPB NUMBER: 090123

TO ORDER  
USE PART NUMBER  
DO NOT USE IPB  
ITEM NUMBER

ARC MACHINES, INC.

PRODUCT MODEL: 9-7500  
DESCRIPTION: MAIN ASSEMBLY  
MANUAL NUMBER: 730036  
NOTES:

IPB ITEM NUMBER	QTY	U/M	PART NUMBER	DESCRIPTION	
1	2	EA	SCS31-18-1.00NP	SCREW CAP SKT 5/16-18 1.00 L	
2	0	-	-	-----	
3	8	EA	SCS08-32-0.75BO	SCREW CAP SKT 8-32 1/2 BLK OXD	
4	0	-	-	-----	
5	4	EA	SCS08-32-0.37NP	SCREW CAP SKT 8-32 3/8 L	
6	1	EA	130905277-01	CLAMP HSG COVER SIDE M9-7500	(ITEMS 8 AND 24 INCLUDED)
7	1	EA	13090789-01	ROTOR 9-7500	(ITEMS 18, 176, & 177 INC)
8	2	EA	13090578-01	LATCH ASSY M9-7500 M9E-7500	
10	1	EA	13090723-01	GROUND STRAP	
11	2	EA	SCS25-20-0.62SP	SCREW CAP SKT 1/4-20 5/8 L SP	
12	1	EA	CK06BX104K	CAP 0.1MF 100V 10%	
13	1	EA	42090148-01	COVER	
14A	0.5	FT	029173	TBG SILICONE 1/8ID 1/4OD RED	
14B	0.08	FT	FP-301-0.25	TBG SHRINK	
14C	18	IN	MS20995C25	LOCKWIRE 1LB SPOOL .025D 304SS	
15	2	EA	W25NP-FL	WASHER FL 1/4	
16	1	EA	42091109-02	PIN ACT 9-7500	
17	1	EA	42091109-01	BUSHING ACT 9-7500	
18	2	EA	SSS06-32-18NPCU	SCREW SET SKT 6-32 3/16 L CUPT	
19	0	-	-	-----	TUNGSTEN
20	1	EA	42090755-01	GUIDE RING	
21	4	EA	SCS10-32-1.25NP	SCREW CAP SKT 10-32 1-1/4 L	
22	1	EA	42090557-01	CLOSURE GAS 9-7500	(ITEMS 131 AND 132 INCLUDED)
23	1	EA	130905276-01	CLAMP HSG HSG SIDE M9-7500	(ITEMS 8 AND 24 INCLUDED)
24	2	EA	PD18-0.37SS	PIN DOWEL 3/16D 3/8L SST	
25	1	EA	42090147-01	HOUSING UPPER	(ITEMS 16, 17, 60, & 172 INC)
26	2	EA	SSR-3LLRA3P2 [	BEARING BALL .18 .50 [5LY-101]	
27	1	EA	13090613-01	GEAR BEVEL	
28	0	-	-	-----	
29	1	EA	SV-8	SPRING WAVE WASHER .351D .44	
30	0	-	-	-----	
31	1	EA	13090602-07	GEAR PINION DRIVE	
32	1	EA	15156	SPRING CPRSN .81D .70L .067W	
33	1	EA	42090602-04	SPACER SPRING	
34	1	EA	42090602-03	COUPLING INSULATING DELRIN	
35	1	EA	13090800-01	CABLE M9 10 FT	
36	1	EA	13090602-04	MOTOR DRIVE PINION 45 RPM	(ITEMS 12 AND 39 INCLUDED)

PRICE, PART NUMBER AND  
DESCRIPTION SUBJECT TO  
CHANGE WITHOUT NOTICE

IPB NUMBER: 090123

TO ORDER  
USE PART NUMBER  
DO NOT USE IPB  
ITEM NUMBER

ARC MACHINES, INC.  
PRODUCT MODEL: 9-7500  
DESCRIPTION: MAIN ASSEMBLY  
MANUAL NUMBER: 730036  
NOTES:

IPB ITEM NUMBER	QTY	U/M	PART NUMBER	DESCRIPTION	
37	4	EA	SCS04-40-0.31NP	SCREW CAP SKT 4-40 5/16 L	
38	1	EA	42091102-04	INSULATOR SKIRT	
39	1	EA	JF2P2SCD	CONN 4 PIN PLUG MINIATURE	
40	2	EA	42060104-01	HANDLE	
41	2	EA	SFS04-40-1.00NP	SCREW FLH SKT 4-40 1.00 L	
42	4	EA	SFS04-40-0.37NP	SCREW FLH SKT 4-40 3/8 L	
43	0	-	-	-----	
44	2	EA	SCS02-56-0.25NP	SCREW CAP SKT 2-56 1/4 L	
45	2	EA	W04-FL	WASHER FLAT #4	
46	1	EA	42090619-02	COVER PLATE BOT LIMIT SW	
47	0	-	-	-----	
48	1	EA	42090619-01	COVER PLATE TOP LIMIT SW	
49	4	EA	SFS04-40-0.31NP	SCREW FLH SKT 4-40 5/16 L	
50	2	EA	SFS02-56-0.25NP	SCREW FLH SKT 2-56 1/4 L	
51	1	EA	MMGGD1D0C	SWITCH LIMIT PLUNGER	
52	2	EA	SCS04-40-0.25NP	SCREW CAP SKT 4-40 1/4 L	
53	1	EA	42090616-05	PLATE LIMIT SWITCH	
54	0	-	-	-----	
55	9	EA	SFL08-32-0.62NY	SCREW FLH SLT 8-32 5/8 L NYL	
56	1	EA	42090557-02	CLOSURE GAS SM 9-7500	
57	1	EA	L-14	SPRING CPRSN .25D .43L .020W	
58	1	EA	42091108-03	LEVER LIMIT SW ACTR	
59	0	-	-	-----	
60	1	EA	42090146-01	HOUSING DRIVE	(SEE ITEM 25)
61	1	EA	42090617-02	SPACER BEVEL GEAR	
62	1	EA	42090548-02	RETAINER PLATE	
63	4	EA	SFS04-40-0.37NP	SCREW FLH SKT 4-40 3/8 L	
64	1	EA	2-014	O RING .489 ID .070 W	
65	1	EA	JF2S2PCD	CONN 4 SOCKET RECEPTACLE MINTR	
66	2	EA	42090627-01	SPROCKET (14EM26S-22)	
67	1	EA	13090634-02	TENSIONER LH	
68	2	EA	B-36	BEARING NEEDLE .18 ID .344 OD	
72	2	EA	5100-18-C	RTNG RING BASIC EXT 3/16 SHAFT	(BERYLLIUM COPPER)
73	0	-	-	-----	
74	1	EA	13090634-01	TENSIONER RH	
77	2	EA	13090625-01	BRACKET H R/H	
78	7	EA	W08NP-FL	WASHER FLAT #8	

PRICE, PART NUMBER AND  
DESCRIPTION SUBJECT TO  
CHANGE WITHOUT NOTICE

IPB NUMBER: 090123

TO ORDER  
USE PART NUMBER  
DO NOT USE IPB  
ITEM NUMBER

ARC MACHINES, INC.

PRODUCT MODEL: 9-7500  
DESCRIPTION: MAIN ASSEMBLY  
MANUAL NUMBER: 730036  
NOTES:

IPB ITEM NUMBER	QTY	U/M	PART NUMBER	DESCRIPTION
79	6	EA	SCS08-32-0.31NP	SCREW CAP SKT 8-32 5/16 L
80	2	EA	SCS08-32-0.75BO	SCREW CAP SKT 8-32 1/2 BLK OXD
81	4	EA	5720-17-32	WASHER .19 ID .44 D .032 T
82	1	EA	47SS-221	CHAIN 32.597IN (221 SGMT)W/LNK
83	1	EA	2-010-S604-70	O RING .238 ID .070 W SILICONE
84	1	EA	420901126-02	GROMMET
87	2	EA	42090164-06	PIN .375D 2.59L 9-7500
88	0	-	-	-----
89	0	-	-	-----
91	2	EA	W31SS-FL	WASHER FL 5/16 SIZE SST
92	1	EA	<del>42060800-02</del>	<del>COUPLING Q/D CONN (SM-251B)</del>
93	1	EA	<del>SM252B</del>	<del>COUPLING</del>
94	1	EA	<del>294-PMB-04</del>	<del>DO NOT SELL USE: 1351109-01</del>
95	1	EA	<del>MS3106E10-1P</del>	<del>CONN 10 PIN PLUG</del>
96	1	EA	<del>G1501N106A3A</del>	<del>CONN BACKSHELL</del>
97	4	EA	2-108-S604-70	O RING .237 ID .103 W SILICONE
98	0	-	-	-----
99	1	EA	<del>MS39056-3</del>	<del>CONN TELESCOPIC BUSHING</del>
105	1	EA	420907168-04	HEAT SHIELD HOUSING 9-7500
106	2	EA	42090631-03	SHAFT
107	0	-	-	-----
121	1	EA	RN55D3160F	RES 316 OHM 1/4W
122	1	EA	RN55D7681F	RES 0.25W 7.68K 1%
123	1	EA	7051	CONN 5 PIN MALE
124	1	EA	<del>7052</del>	<del>CONN 5 PIN FEMALE</del>
125	0	-	-	-----
126	1	EA	<del>2PF1</del>	<del>FTG 1/4-20 FEMALE</del>
127	2	EA	<del>ARC 1001</del>	<del>FTG WTR/PWR GA CRIMP 1/4-20</del>
128	1	EA	420907168-03	HEAT SHIELD COVER 9-7500
129	2	EA	42090174-21	SCREW 9-7500 (SFS25-20-2.62NP)
130	4	EA	SCS04-40-0.62NP	SCREW CAP SKT 4-40 5/8 L
131	4	EA	SFL06-32-0.37NY	SCREW FLH SLT 6-32 3/8 L NYL
132	1	EA	42090557-03	WINDOW
134	1	EA	13090803-01	TUBE FTG GAS
135	1	EA	<del>R61002GCB</del>	<del>TERM 16 14 AWG #6</del>
136	0	-	-	-----
138	0	-	-	-----

BRASS SWIVEL NUT (FEMALE)

PRICE, PART NUMBER AND  
DESCRIPTION SUBJECT TO  
CHANGE WITHOUT NOTICE

IPB NUMBER: 090123

TO ORDER  
USE PART NUMBER  
DO NOT USE IPB  
ITEM NUMBER

ARC MACHINES, INC.

PRODUCT MODEL: 9-7500  
DESCRIPTION: MAIN ASSEMBLY  
MANUAL NUMBER: 730036  
NOTES:

IPB ITEM NUMBER	QTY	U/M	PART NUMBER	DESCRIPTION
139	0	-	-	-----
140	0	-	-	-----
142	2	EA	42090174-22	SCREW 9-7500 (SCS25-20-2.50NP)
<del>144</del>	<del>1</del>	<del>EA</del>	<del>42060805-04</del>	<del>BOOT MALE GAS</del>
<del>145</del>	<del>2</del>	<del>EA</del>	<del>42060804-01</del>	<del>BOOT MALE POWER/GROUND</del>
<del>146</del>	<del>2</del>	<del>EA</del>	<del>42060800-07</del>	<del>FTC COUPLING HOSE/CABLE</del>
147	0	-	-	-----
148	0	-	-	-----
171	1	EA	42090749-01	CONDUCTOR GND STRAP
172	1	EA	SPL25-20-0.50NY	SCREW PNH SLT 1/4-20 1/2 L NYL
173	0	-	-	-----
<del>174</del>	<del>1</del>	<del>EA</del>	<del>261 PG 04</del>	<del>FTC NUT/SLEEVE SPRING 1/4 TUBE</del>
<del>175</del>	<del>1</del>	<del>EA</del>	<del>AS200718</del>	<del>SPRING GUARD .34 OD 18.00 LG</del>
176	1	EA	42090548-05	CAM SWITCH
177	2	EA	SCS04-40-0.31NP	SCREW CAP SKT 4-40 5/16 L
185	1	EA	1350110-04	DUST CAP ASSY W/CHAIN(MALE18D)
186	0	-	-	-----
188	1	EA	3057L-1-202	POT TRIM 2K OHM 5%
189	1	EA	420907211-01	PLATE BACKING M9-7500
<del>200</del>	<del>9</del>	<del>FT</del>	<del>DUCT 0.87 50 W</del>	<del>CONDUIT WHIT 0.87 ID</del>
<del>201</del>	<del>6</del>	<del>IN</del>	<del>M23053/5 111 0</del>	<del>TBC SHRINK 1 1/2 ID BLK</del>
202	1	EA	13090771-01	CONDUCTOR RING 9-7500

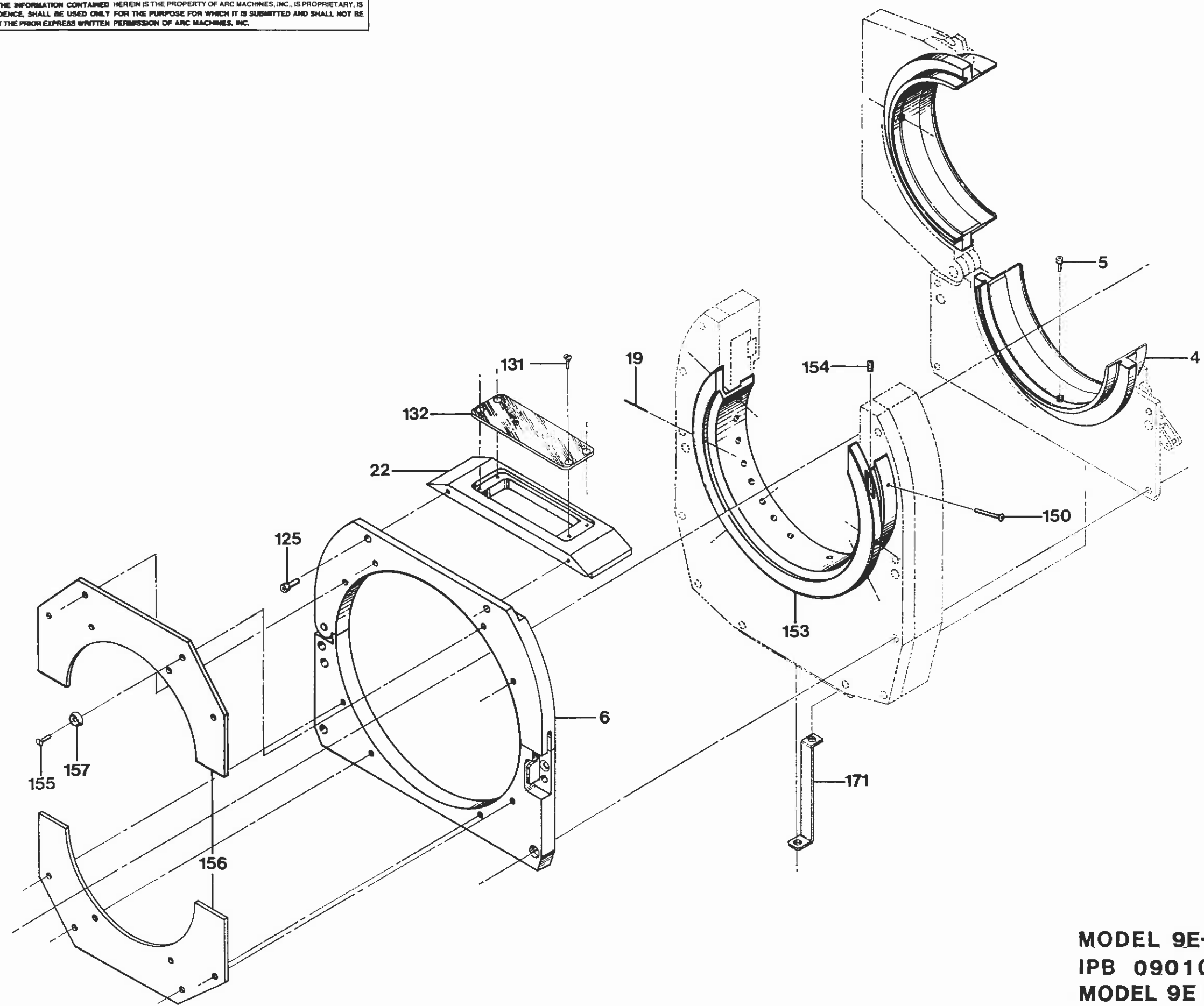
PRICE, PART NUMBER AND  
DESCRIPTION SUBJECT TO  
CHANGE WITHOUT NOTICE

THIS DOCUMENT OR DRAWING AND THE INFORMATION CONTAINED HEREIN IS THE PROPERTY OF ARC MACHINES, INC.. IS PROPRIETARY, IS SUBMITTED AND RECEIVED IN CONFIDENCE, SHALL BE USED ONLY FOR THE PURPOSE FOR WHICH IT IS SUBMITTED AND SHALL NOT BE COPIED IN WHOLE OR IN PART WITHOUT THE PRIOR EXPRESS WRITTEN PERMISSION OF ARC MACHINES, INC.



ART No

REV TO PARTS LIST FOR MODEL 9E



MODEL 9E-7500  
IPB 090106  
MODEL 9E CONFIGURATION

IPB NUMBER: 090106

TO ORDER  
USE PART NUMBER  
DO NOT USE IPB  
ITEM NUMBER

ARC MACHINES, INC.

PRODUCT MODEL: 9-7500  
DESCRIPTION: MODEL 9E CONFIGURATION  
MANUAL NUMBER: 730036  
NOTES:

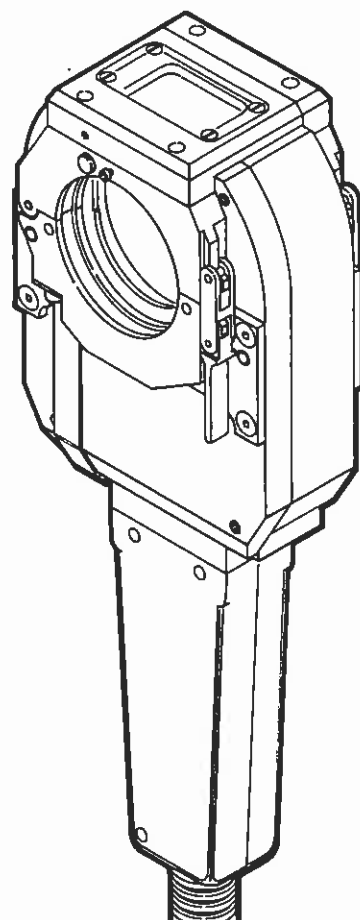
IPB ITEM NUMBER	QTY	U/M	PART NUMBER	DESCRIPTION	
1	0	-	-	-----	
4	0	-	-	-----	
5	2	EA	SCS08-32-0.37NP	SCREW CAP SKT 8-32 3/8 L	CLAMP INSERT-ORD BY SIZE
6	1	EA	13090549-01	HOUSING GAS SEAL 9E-7500	
7	0	-	-	-----	
19	0	-	-	-----	
22	1	EA	420905192-01	CLOSURE 9E-7500	TUNGSTEN (ITEMS 131 AND 132 INCLUDED)
23	0	-	-	-----	
125	2	EA	SCS10-32-0.62BO	SCREW CAP SKT 10-32 5/8 BLK OX	
126	0	-	-	-----	
131	4	EA	SFL06-32-0.31NY	SCREW FLH SLT 6-32 5/16 L NYL	
132	1	EA	420905192-02	WINDOW	
133	0	-	-	-----	
150	4	EA	SFS08-32-1.25NP	SCREW FLH SKT 8-32 1.25 L	
151	0	-	-	-----	
153	1	EA	13090741-01	ROTOR EXTENSION 9E-7500	
154	2	EA	420907144-12	SCREW SET SKT 6-32 3/8 L FLPT	
155	8	EA	SFL08-32-0.50NY	SCREW FLH SLT 8-32 1/2 L NYL	
156	0	-	-	-----	
157	8	EA	11SFW0008	WASHER NYLON FINISHING #8	GAS SEALS-ORD BY SIZE
158	0	-	-	-----	
171	1	EA	42090749-04	GROUND STRAP	
172	0	-	-	-----	
180	1	EA	13090158-05	KIT CVRSN M9-7500 TO M9E-7500	

PRICE, PART NUMBER AND  
DESCRIPTION SUBJECT TO  
CHANGE WITHOUT NOTICE

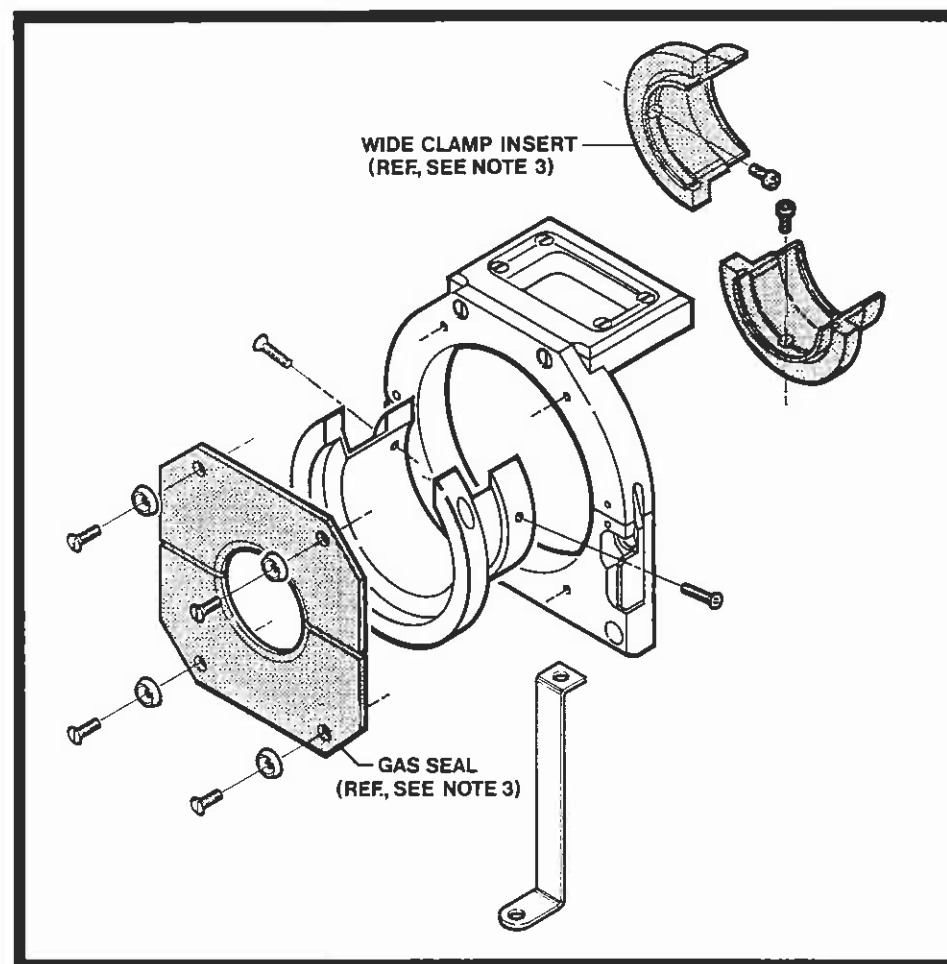
**MODEL 9 CONVERSION TO MODEL 9E  
INSTRUCTIONS**

**P/N 750031**

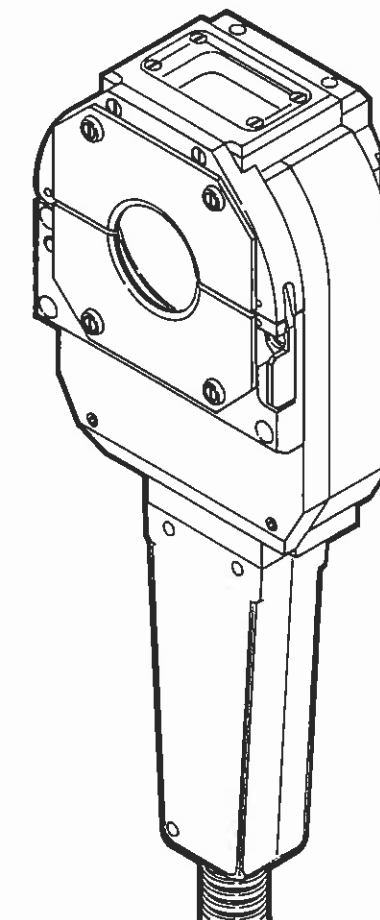
(MODELS 9-1500, 9-2500, 9-3500, 9-4500 AND 9-7500)



**MODEL 9**

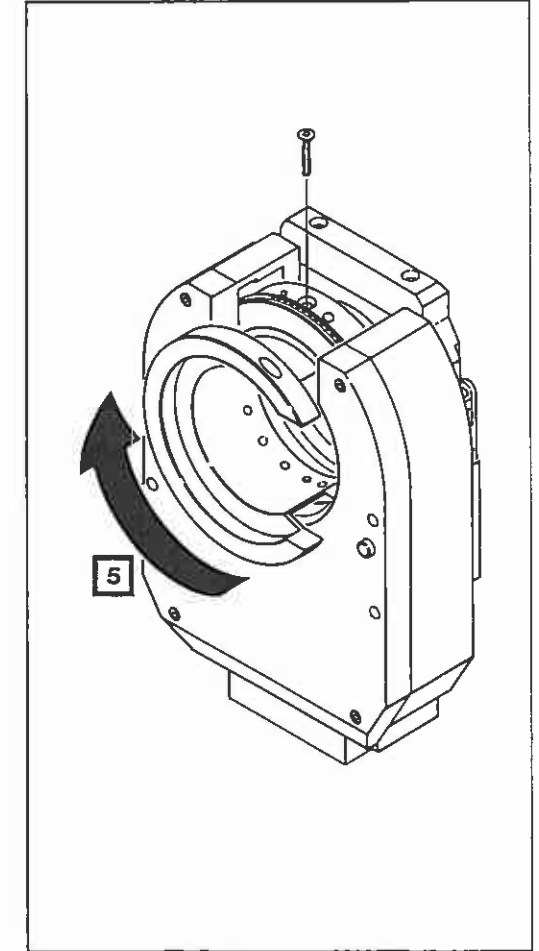
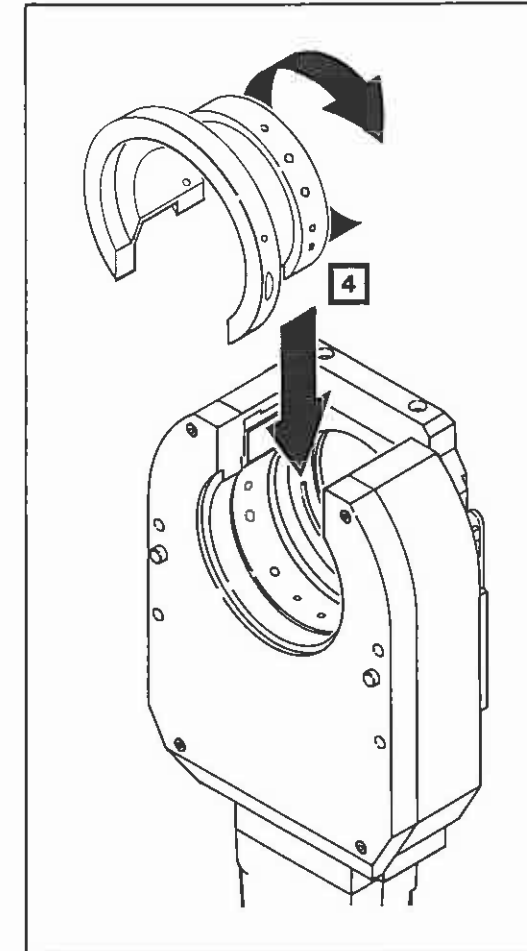
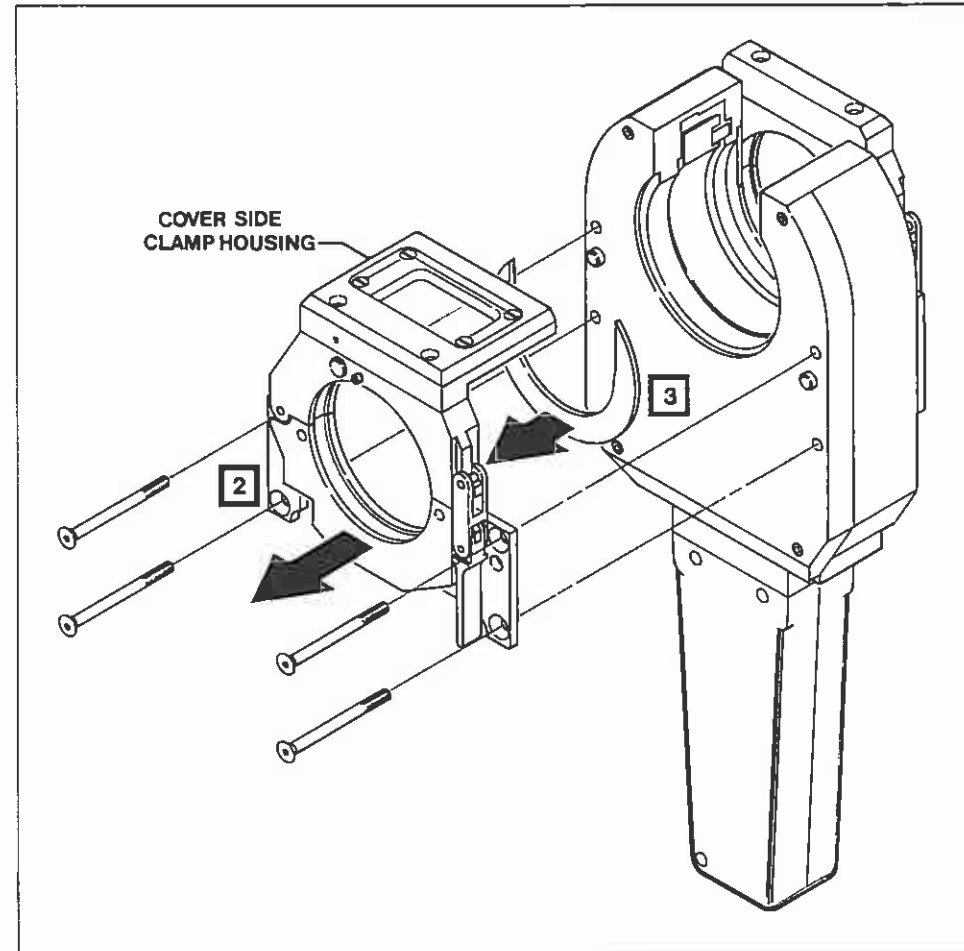
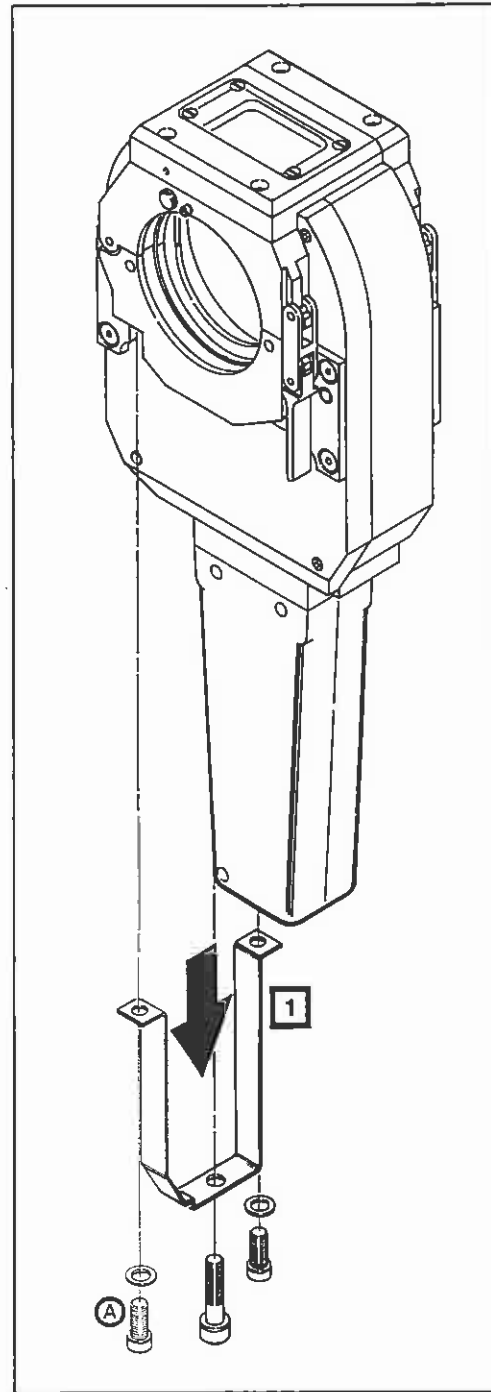


**MODEL 9E KIT  
( OPTION )**



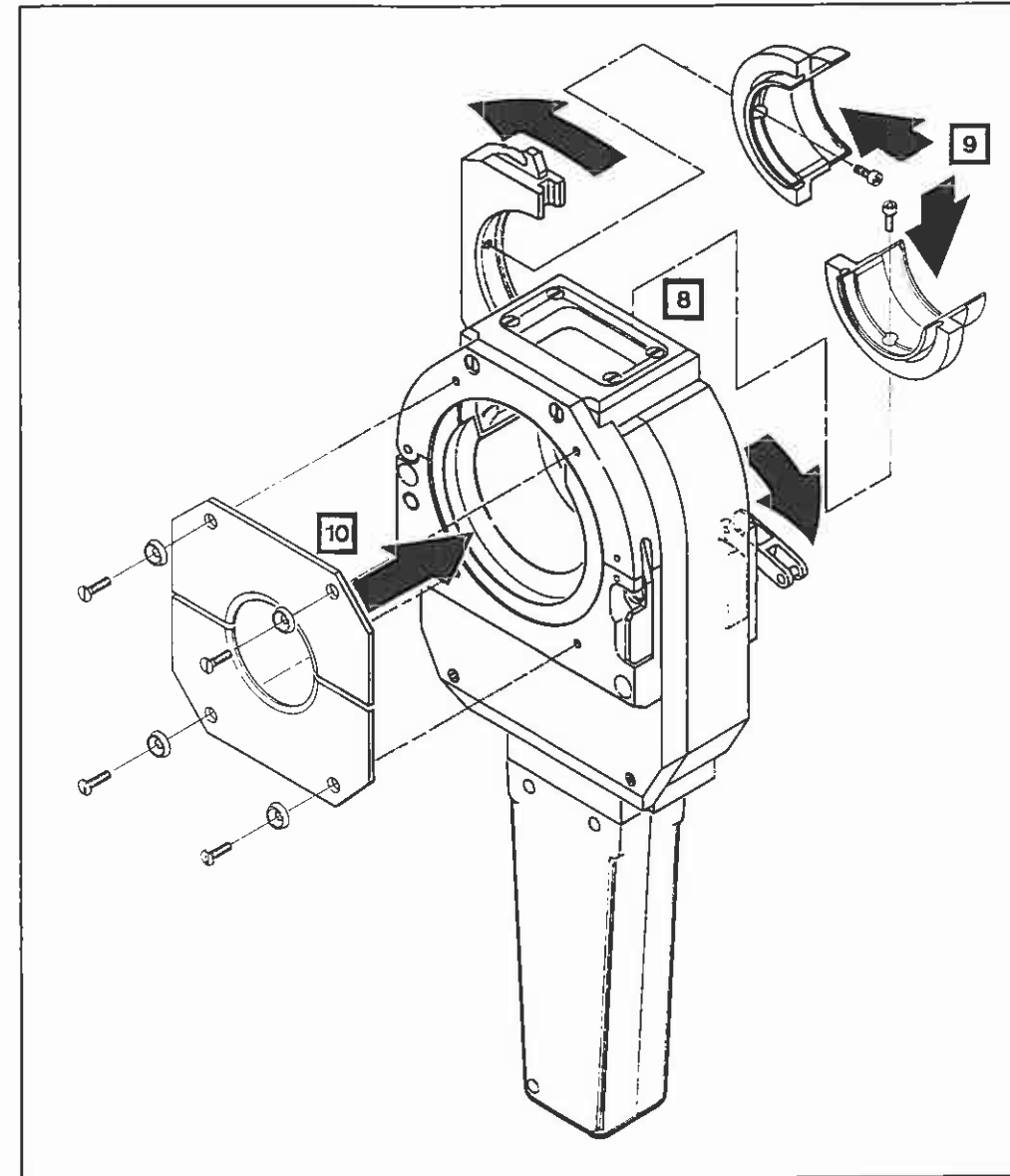
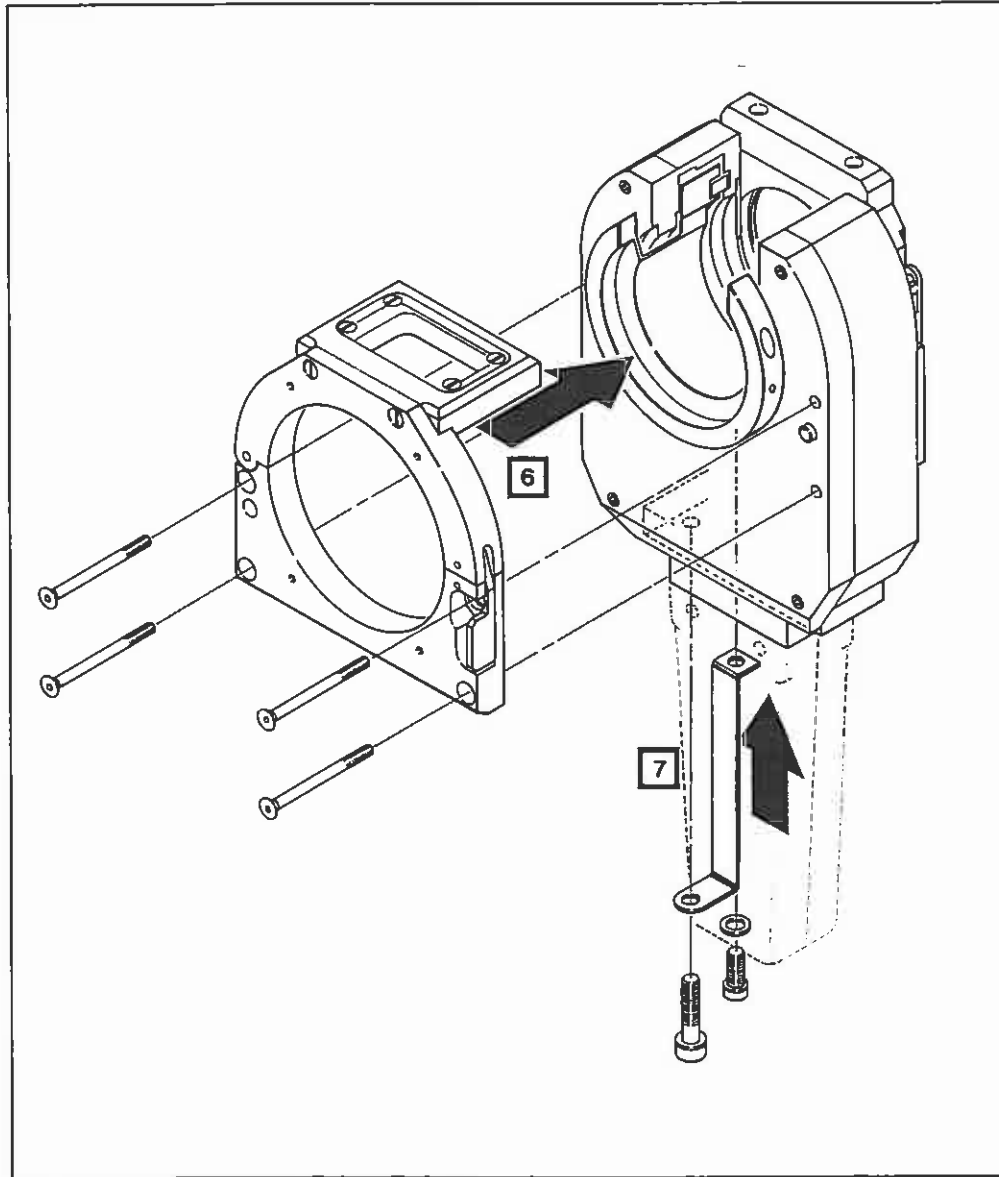
**MODEL 9E**

- NOTES :**
- 1. TO ORDER MODEL 9E KIT SPECIFY WELD HEAD MODEL NUMBER.
  - 2. MODEL 9-2500 USED FOR ILLUSTRATION.
  - 3. WIDE CLAMP INSERT AND GAS SEAL ARE NOT INCLUDED IN KIT.  
TO ORDER WIDE CLAMP INSERT AND GAS SEAL SPECIFY TUBE SIZE ( O.D. ).

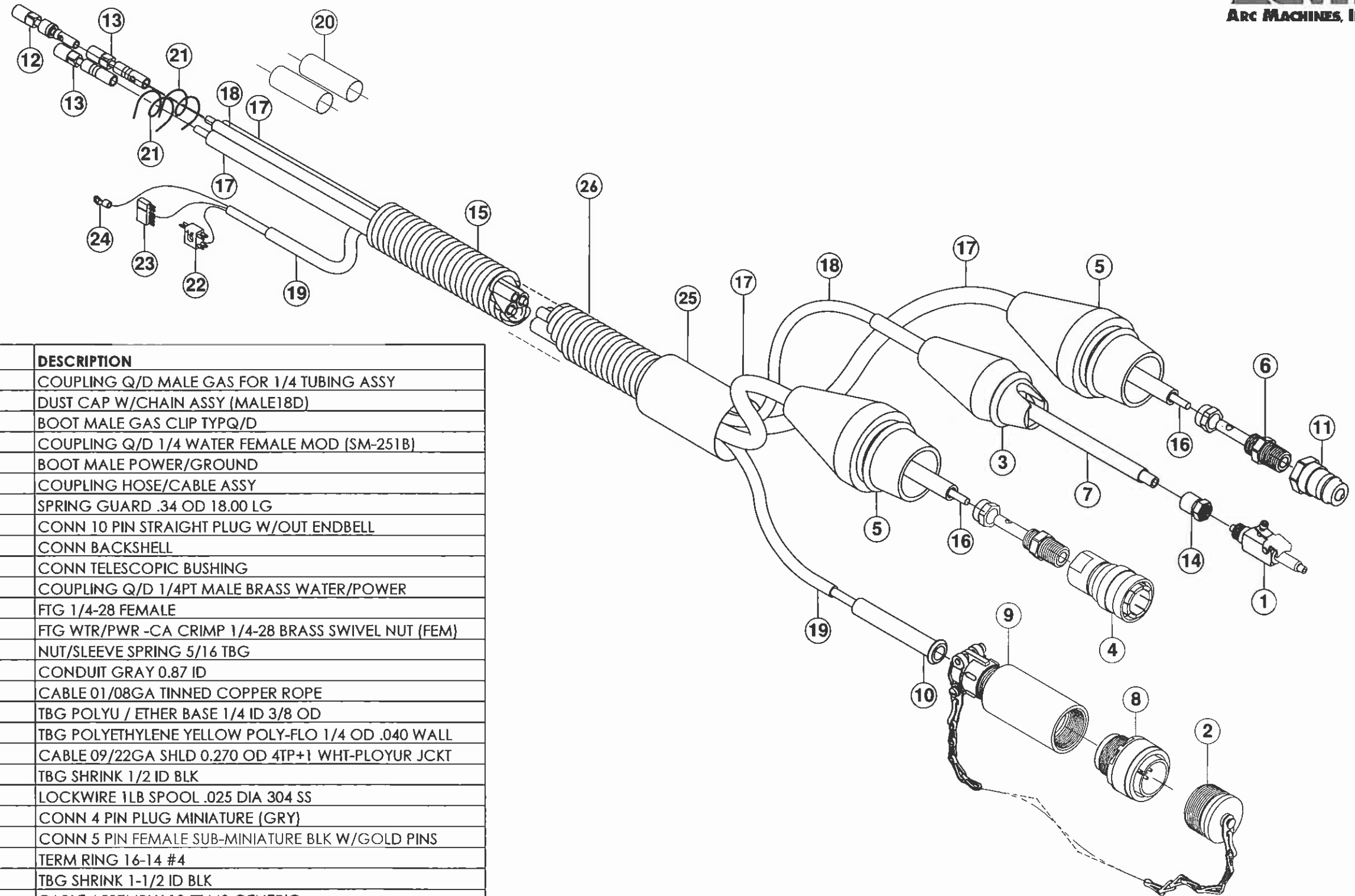


- 1** REMOVE ORIGINAL GROUND STRAP EXCEPT ON MODEL 9-1500 REMOVE SCREW (A) ONLY ( ORIGINAL GROUND STRAP IS USED ).
- 2** REMOVE COVER SIDE CLAMP HOUSING.
- 3** REMOVE HEAT SHIELD.
- 4** INSTALL ROTOR EXTENSION FROM THE KIT.
- 5** CONNECT WELD HEAD TO POWER SUPPLY AND JOG ROTOR UNTIL ROTOR EXTENSION MOUNTING SCREW HOLE IS ACCESSIBLE. INSTALL MOUNTING SCREWS ( 2 TO 4 EACH DEPENDING ON MODEL # ) AND TIGHTEN.





- 6** MOUNT THE GAS SEAL HOUSING ASSEMBLY FROM THE KIT TO THE WELD HEAD USING ORIGINAL SCREWS.
- 7** INSTALL GROUND STRAP FROM THE KIT USING ORIGINAL SCREWS, EXCEPT FOR MODEL 9-1500 USE ORIGINAL GROUND STRAP AND SCREWS.
- 8** OPEN HOUSING SIDE CLAMP.
- 9** INSTALL WIDE CLAMP INSERT ASSEMBLY (NOT PROVIDED IN CONVERSION KIT).
- 10** INSTALL GAS SEAL ASSEMBLY (NOT PROVIDED IN CONVERSION KIT).



ITEM NO.	QTY.	PART NO.	DESCRIPTION
1	1	1351109-01	COUPLING Q/D MALE GAS FOR 1/4 TUBING ASSY
2	1	1350110-04	DUST CAP W/CHAIN ASSY (MALE18D)
3	1	42060805-04	BOOT MALE GAS CLIP TYPQ/D
4	1	42060800-02	COUPLING Q/D 1/4 WATER FEMALE MOD (SM-251B)
5	2	42060804-01	BOOT MALE POWER/GROUND
6	2	42060800-07	COUPLING HOSE/CABLE ASSY
7	1	AS200718	SPRING GUARD .34 OD 18.00 LG
8	1	MS3106E18-1PF42	CONN 10 PIN STRAIGHT PLUG W/OUT ENDBELL
9	1	G1501N186A3A	CONN BACKSHELL
10	1	MS39056-3	CONN TELESCOPIC BUSHING
11	1	SM-252B	COUPLING Q/D 1/4PT MALE BRASS WATER/POWER
12	1	2PF1	FTG 1/4-28 FEMALE
13	2	ARC-1881	FTG WTR/PWR -CA CRIMP 1/4-28 BRASS SWIVEL NUT (FEM)
14	1	261-PG-04	NUT/SLEEVE SPRING 5/16 TBG
15	1	DUCT-0.87-50-G	CONDUIT GRAY 0.87 ID
16	2	NER7-95-36T	CABLE 01/08GA TINNED COPPER ROPE
17	2	42090806-01	TBG POLYU / ETHER BASE 1/4 ID 3/8 OD
18	1	44-P-YELLOW	TBG POLYETHYLENE YELLOW POLY-FLO 1/4 OD .040 WALL
19	1	CWT11943	CABLE 09/22GA SHLD 0.270 OD 4TP+1 WHT-PLOYUR JCKT
20	2	M23053/5-108-0	TBG SHRINK 1/2 ID BLK
21	2	MS20995C25	LOCKWIRE 1LB SPOOL .025 DIA 304 SS
22	1	JF2P2SCD	CONN 4 PIN PLUG MINIATURE (GRY)
23	1	7052	CONN 5 PIN FEMALE SUB-MINIATURE BLK W/GOLD PINS
24	1	34119	TERM RING 16-14 #4
25	1	M23053/5-111-0	TBG SHRINK 1-1/2 ID BLK
26	-	13090800-01	CABLE ASSEMBLY 10 FT M9 GENERIC

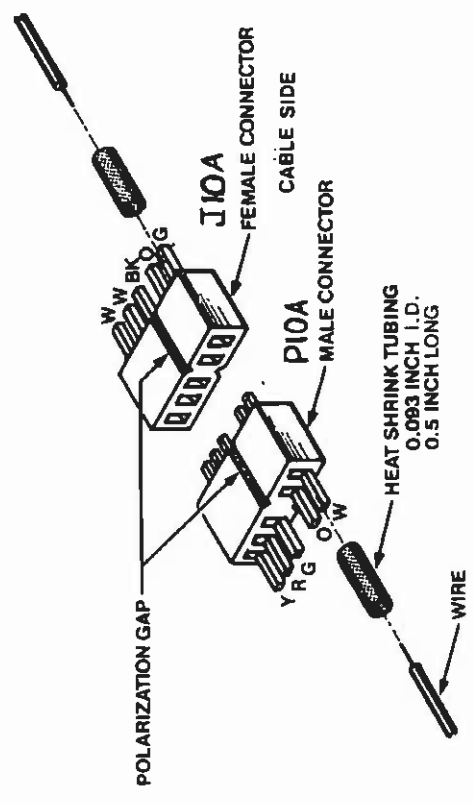
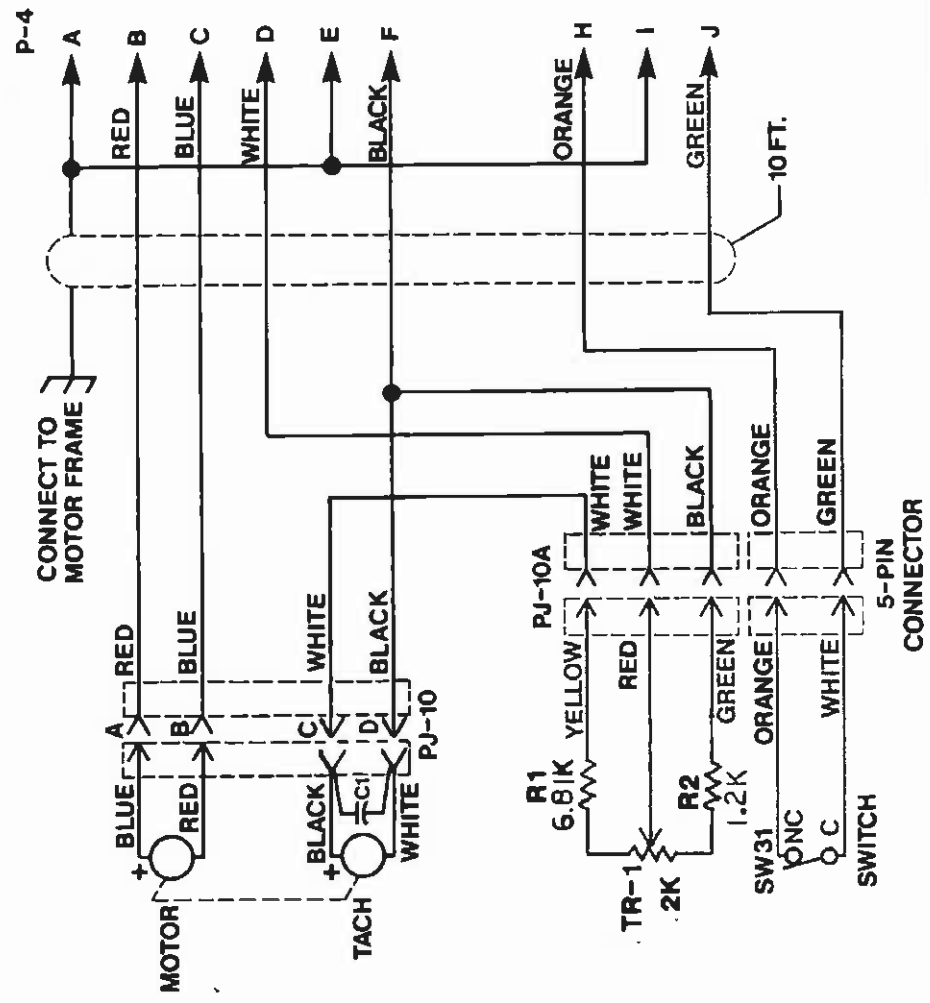
**MODEL 9  
IPB 090800  
CABLE ASSEMBLY**

ISSUED: 3 JAN 2005  
REVISED: 5 OCT 2010

TO ORDER USE PART NUMBER.  
PRICE, PART NUMBER AND DESCRIPTION  
SUBJECT TO CHANGE WITHOUT NOTICE.

THIS IPB SUPERSEDES ALL OTHER IPB'S  
REFERENCING 13090800-01 CABLE ASSEMBLY

LTR	DCD	REVISIONS	DATE	BY	APPR
A	1716	C & D ON PJ-10 REVISED	11-24-92	MH	J
B	1830	R1 WAS: 7.68 K, R2 WAS: 316Ω	11-2-93	MC	6PC
C	2947	ADDED P10A & J10A. REMOVED PN'S FOR P10A, J10A, P4	12-4-97	MC	6PC



ITEM	QTY	IDENTIFYING NO	NOMENCLATURE OR DESCRIPTION	MFR	PART NO
PARTS LIST					
THIS DOCUMENT OR DRAWING AND THE INFORMATION CONTAINED HEREIN IS THE PROPERTY OF ARC MACHINES, INC. IS PROPRIETARY, IS SUBMITTED AND RECEIVED IN CONFIDENCE, SHALL BE USED ONLY FOR THE PURPOSE FOR WHICH IT IS SUBMITTED AND SHALL NOT BE COPIED, REPRODUCED OR IN ANY MANNER WITHOUT THE PRIOR EXPRESS WRITTEN PERMISSION OF ARC MACHINES, INC.					
UNLESS OTHERWISE SPECIFIED		THIRD ANGLE PROJECTION			
ALL DIMENSIONS ARE IN INCHES		FOR UNAPPLIED DIMENSIONS SEE DDD-310-100			
TOLERANCES ARE		APPROVALS			
FRACTIONS DECIMALS ANGLES		R. BILEK			
± 1/8" ± .005 ± .010 ± .005		DATE 10-14-85			
ALL MACHINED SURFACES TO BE		DATE 10-16-85			
MATERIAL		DATE 11-2-93			
[309C080-01]		QUOTATION			
NEXT ASSY		SCALE			
USED ON		DO NOT SCALE DRAWING			
APPLICATION		SHEET 1 OF 1			

**ARC MACHINES INC.**  
**MODEL 9 WELD HEAD**  
**WIRING DIAGRAM**

SIZE MODEL NO. DRWG NO. 175144-08 REV. C